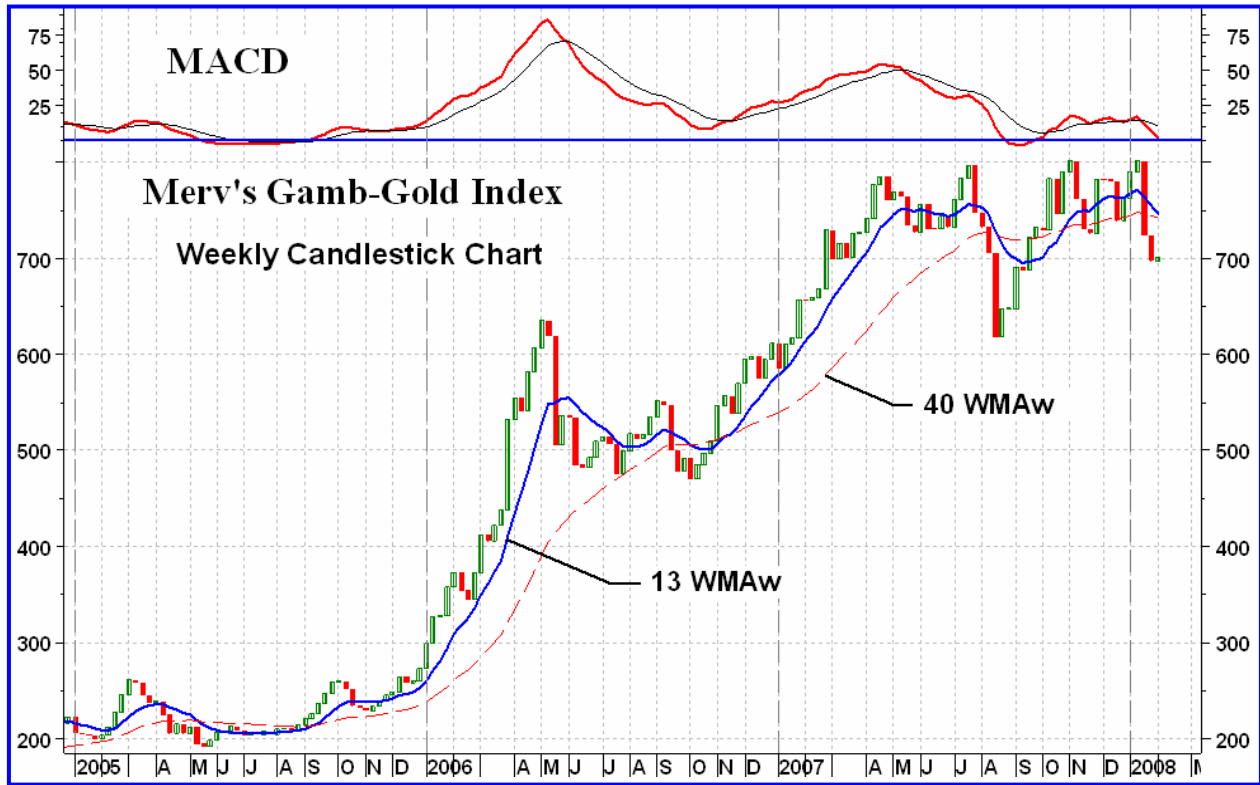


Merv's Gamb-Gold Page
 Weekly Technical Information & Ratings



SECURITIES		SYMBOL	FRI CLOSE	WEEKLY % CHNG	SHORTER TERM				INTERMEDIATE TERM				LONG TERM			
					MA	MOM	RS	RATE	MA	MOM	RS	RATE	MA	MOM	RS	RATE
Acero-Martin Exploration	V-ASD	0.28	+ 14.6%	0.27	+ + POS	+ 10	POS	0.27	- + NEG	- 19	+ N	0.30	- + POS	- 29	- N	
Alto Ventures	V-ATV	0.14	- 20.6%	0.17	- - NEG	- 26	NEG	0.19	- - NEG	- 26	NEG	0.19	- - NEG	- 12	NEG	
Anaconda Gold	T-ANX	0.92	- 3.2%	1.03	- - NEG	- 15	NEG	1.02	- - NEG	- 4	NEG	0.90	+ + POS	+ 9	POS	
Andina Minerals Inc.	V-ADM	4.72	- 2.7%	4.78	- + POS	+ 3	- N	4.71	+ - NEG	+ 3	+ N	4.37	+ + POS	+ 11	POS	
Buffalo Gold	V-BUF	0.44	- 1.1%	0.46	- + POS	- 21	- N	0.48	- + POS	- 29	- N	0.63	+ - NEG	- 30	NEG	
Canasia Industries Corp.	V-CAJ	0.18	- 5.3%	0.19	- + NEG	- 25	NEG	0.23	- - NEG	- 27	NEG	0.24	- - NEG	- 5	NEG	
Canplats	V-CPQ	2.65	+ 8.2%	2.80	- - NEG	- 27	NEG	2.74	+ - POS	+ 1	- N	1.74	+ + POS	+ 1	POS	
Carmax Explorations Ltd.	V-CMX	0.12	0.0%	0.15	- - NEG	- 28	NEG	0.19	- - NEG	- 24	NEG	0.19	- - NEG	- 13	NEG	
Chesapeake Gold Corp.	V-CKG	7.50	- 3.2%	7.75	- - NEG	+ 16	NEG	7.91	- - NEG	+ 5	NEG	7.58	+ - POS	+ 21	- N	
Comaplex Minerals Corp.	T-CMF	5.80	- 0.9%	6.03	- - NEG	+ 9	NEG	6.08	- - NEG	+ 7	NEG	5.91	+ - NEG	+ 14	NEG	
Dynasty Metals & Mining Inc.	T-DMM	7.91	+ 8.8%	7.53	+ + POS	+ 4	POS	7.97	- - NEG	- 15	NEG	8.51	- - NEG	- 22	NEG	
Eaglecrest Explorations Ltd.	V-EEL	0.19	- 2.6%	0.19	- + POS	+ 7	- N	0.20	- - NEG	- 8	NEG	0.19	+ + POS	+ 17	N	
Far West Mining Ltd.	T-FWM	3.70	0.0%	3.81	- + POS	+ 14	- N	3.94	- - NEG	- 17	NEG	4.21	- - NEG	- 25	NEG	
Freegold Ventures Ltd.	T-ITF	1.65	- 5.7%	1.76	- - NEG	- 20	NEG	1.90	- - NEG	- 13	NEG	1.88	- - NEG	- 18	NEG	
Kodiak Exploration Ltd.	V-KXL	2.70	- 6.9%	3.12	- - NEG	- 30	NEG	3.76	- - NEG	- 16	NEG	3.15	+ - NEG	+ 3	NEG	
Lake Shore Gold Corp.	T-LSG	1.79	+ 7.8%	1.76	+ + POS	+ 5	POS	1.74	+ + NEG	+ 10	POS	1.78	+ + POS	+ 26	POS	
MacMillan Gold Corp.	V-MMG	0.52	- 5.5%	0.57	- - NEG	- 17	NEG	0.60	- - NEG	- 21	NEG	0.60	- - NEG	+ 16	NEG	
Maximus Ventures	V-MXV	0.43	+ 6.2%	0.43	+ + POS	+ 6	POS	0.44	- - NEG	- 20	NEG	0.43	+ - NEG	+ 10	+ N	
NFX Gold	V-NFX	0.43	- 17.3%	0.50	- - POS	- 18	NEG	0.54	- - NEG	- 30	NEG	0.59	- - NEG	- 6	NEG	
Noront Res. Ltd.	V-NOT	4.46	+ 29.3%	3.85	+ + POS	+ 8	POS	4.08	+ - NEG	+ 25	+ N	4.07	+ - NEG	+ 2	+ N	
Orex Ventures	V-REX	0.30	- 7.8%	0.35	- - NEG	- 22	NEG	0.36	- - NEG	- 11	NEG	0.34	- - POS	+ 20	NEG	
Pediment Exploration Ltd.	V-PEZ	2.83	+ 8.4%	2.79	- + POS	+ 11	POS	2.86	- - NEG	+ 9	NEG	2.67	+ - NEG	+ 4	+ N	
Sage Gold Inc.	V-SGX	0.28	- 9.7%	0.33	- - NEG	- 29	NEG	0.41	- - NEG	- 28	NEG	0.38	- - NEG	- 7	NEG	
Silverado Gold Mines	O-SLGLF	0.07	+ 6.3%	0.07	+ + POS	+ 2	POS	0.06	+ + POS	+ 12	POS	0.07	+ + POS	- 28	- N	
Temex Res. Corp.	V-TME	0.53	+ 6.0%	0.54	- - NEG	- 24	NEG	0.61	- - NEG	- 23	NEG	0.61	- - NEG	+ 19	NEG	
Timmins Gold Corp.	V-TMM	0.99	- 3.9%	0.97	+ + POS	+ 1	POS	0.89	+ + POS	+ 2	POS	0.81	+ + POS	+ 8	POS	
Tyhee Development Corp.	V-TDC	0.45	- 3.2%	0.47	- + POS	- 19	- N	0.52	- - NEG	- 22	NEG	0.54	- - NEG	- 23	NEG	
Virginia Mines	T-VGQ	6.15	- 2.4%	6.57	- - NEG	- 23	NEG	7.11	- - NEG	- 14	NEG	7.19	- - NEG	- 24	NEG	
Western Goldfields Inc.	T-WGI	3.61	+ 0.3%	3.55	- - NEG	+ 13	N	3.57	+ - NEG	+ 6	+ N	3.44	+ - NEG	+ 15	+ N	
WSR Gold	V-WSR	0.37	+ 21.7%	0.34	+ + POS	+ 12	POS	0.35	+ + POS	+ 18	POS	0.34	+ + POS	+ 27	POS	

BULLISH (+) / BEARISH (-) Percentage

+ 30% / - 58%

+ 20% / - 70%

+ 27% / - 58%